

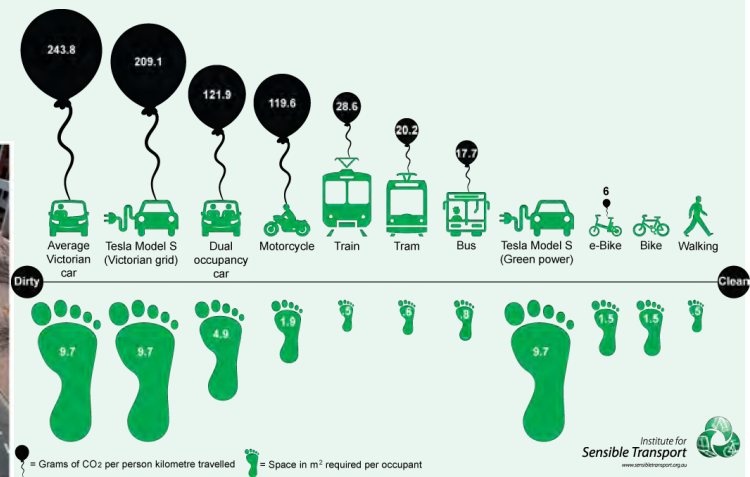


## PARLIAMENTARY FRIENDS OF CYCLING E-BIKE FACT SHEET

- An e-bike is a bicycle with an electric motor that assists the rider when pedalling
- Riding bikes is a legitimate and realistic transport option for the 50% of all trips that are 5km or less
- E-bikes support more people of all ages and abilities to ride, carry children & other loads, and is attracting people to ride a bike for their trips to local shops, school & work
- e-bikes cost a fraction of an EV, just cents per 100km to run and parking is a breeze
- Riding bikes is one of the fastest and most efficient methods we already have to decarbonise transport and reduce our dependency on fossil fuels.

**E-bike batteries** use about 30 cylindrical lithium-ion cells (3.3kg). A Tesla 3 uses 4,416 cells (long-range model - 530kg).

**One EV battery** therefore corresponds to the number of batteries required for around 147 e-bikes!



- **Popular:** 5X more e-bikes were sold than EVs in 2021-22, with sales growing over 800% to 75,000 in the 5 yrs to 2021-22.
- **Ready to Ride:** More than 10 million Australians chose to ride in 2021 with many getting on bikes during the pandemic.
- **Accessibility:** e-bikes & other light electric vehicles reduce barriers to mobility for older riders and those with a disability.
- **Accessibility:** 24% of Victorian & New South Wales 16 – 24 year-olds (and about 15% of all Australians) do not to hold a driver's license - active travel and bike share with public transport are vital to provide options to keep us all moving.
- **Freight:** The last mile is one of the most costly and highest polluting segments of the supply chain. e-bikes enable more than 10 times as many deliveries as vans (even electric vans) with a quarter of the CO<sub>2</sub> emissions.

References and information here: [https://www.weride.org.au/wp-content/uploads/2022/11/2022-October\\_Submission-to-National-Electric-Vehicle-Strategy\\_FINAL.pdf](https://www.weride.org.au/wp-content/uploads/2022/11/2022-October_Submission-to-National-Electric-Vehicle-Strategy_FINAL.pdf)

### THE PARLIAMENTARY FRIENDS OF CYCLING IS CO-CONVENED BY:

Zaneta Mascarenhas, Member for Swan, Hon. Andrew Wallace, Member for Fisher and Dr Helen Haines, Member for Indi.

The Parliamentary Friends of Cycling was established to provide a non-partisan forum for parliamentarians to meet and engage on the contribution of the bicycle and active transport for a more efficient transport system including new technologies, for better physical and mental health, for their contribution to a low carbon future, improved community liveability and environment, increased transport equity and regional economic development.

We Ride Australia is the national, independent voice for cycling and supports the Co-Chairs for the Parliamentary Friends of Cycling events.

[www.weride.org.au](http://www.weride.org.au) E-mail: [yes@weride.org.au](mailto:yes@weride.org.au)

