

Baringa, QLD, Australia

Bicycle Network Analysis Score Summary



placesforbikes

Each score represents how well a person can access the corresponding type of destination via the low-stress bicycle network within the city. The scale runs from 0 (inaccessible) to 100 (completely accessible).

OVERALL	33
PEOPLE	29
CORE SERVICES	0
Dentists	0
Doctors	0
Grocery	0
Hospitals	0
Pharmacies	0
Social Services	0
OPPORTUNITY	39
K-12 Education	39
RECREATION	78
Community Centers	55
Parks	72
Trails	100
RETAIL	29
TRANSIT	N/A

VISIT BNA.PeopleForBikes.org for dynamic web maps and data download

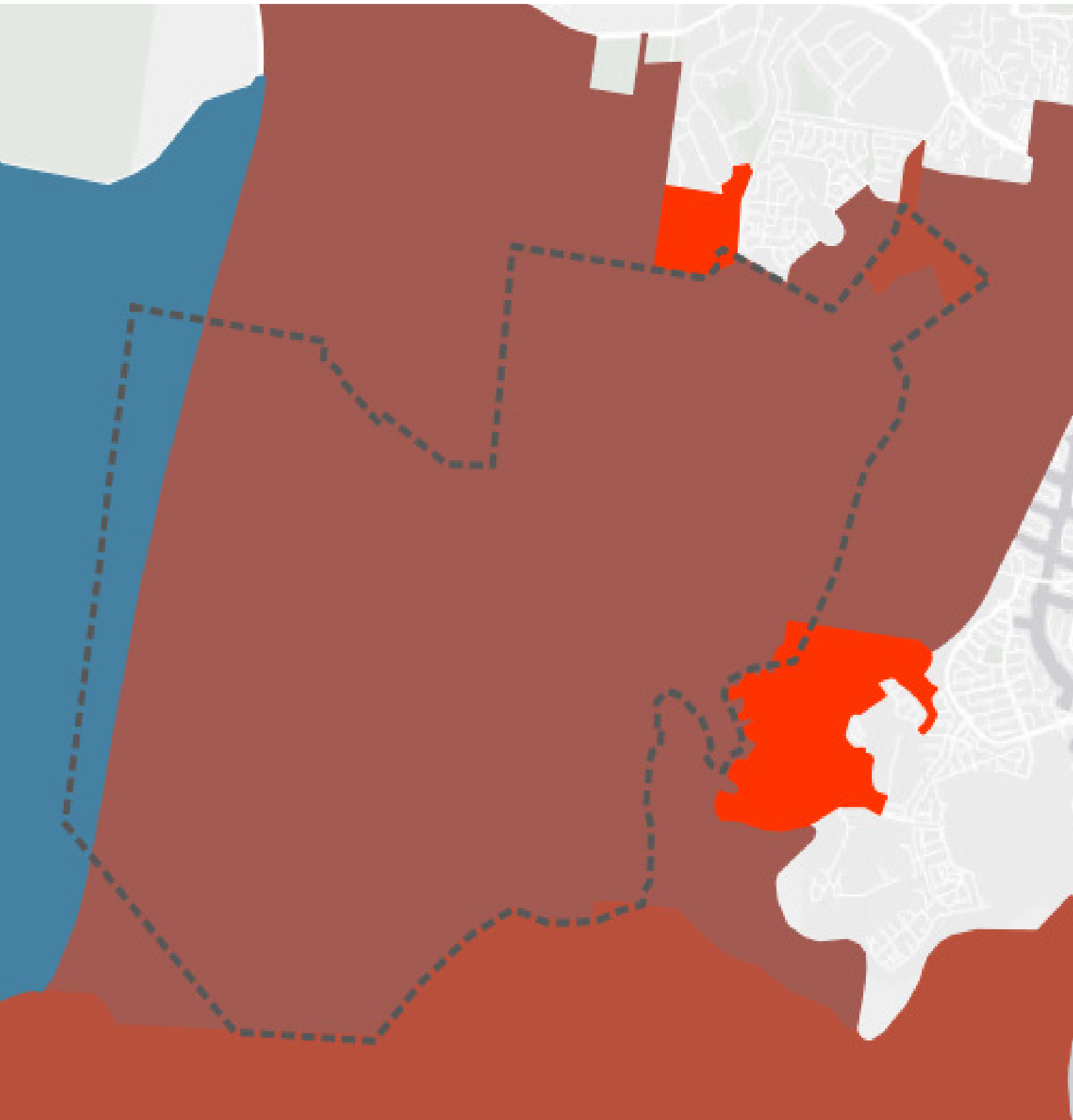
SOURCES: OpenStreetMap, 2016 Census (Australian Bureau of Statistics), QGIS, ESRI

Baringa, QLD, Australia

Bicycle Network Analysis Census Block Access



placesforbikes



Baringa, QLD, Australia

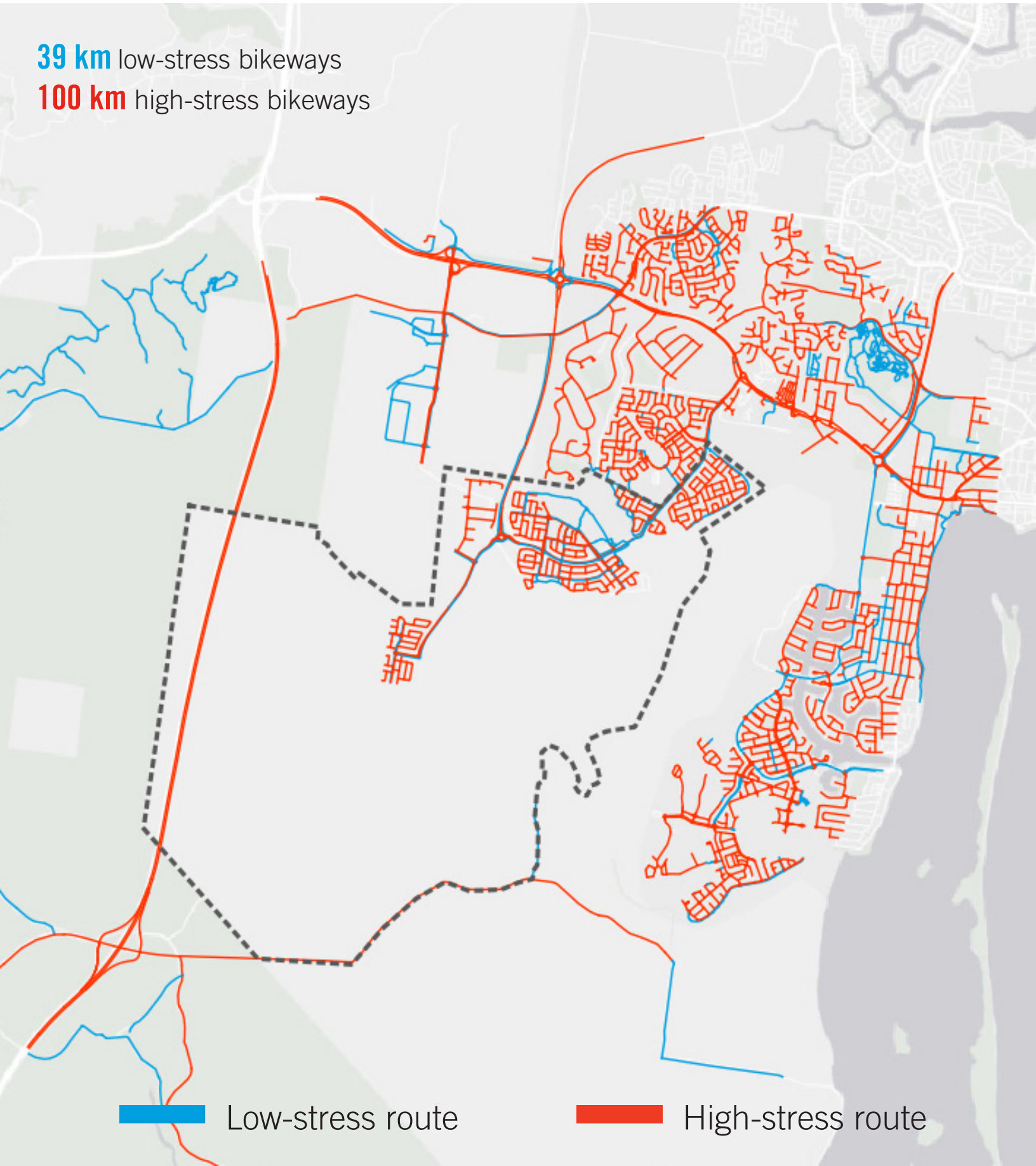
Bicycle Network Analysis Stress Network




placesforbikes

39 km low-stress bikeways

100 km high-stress bikeways



 Low-stress route

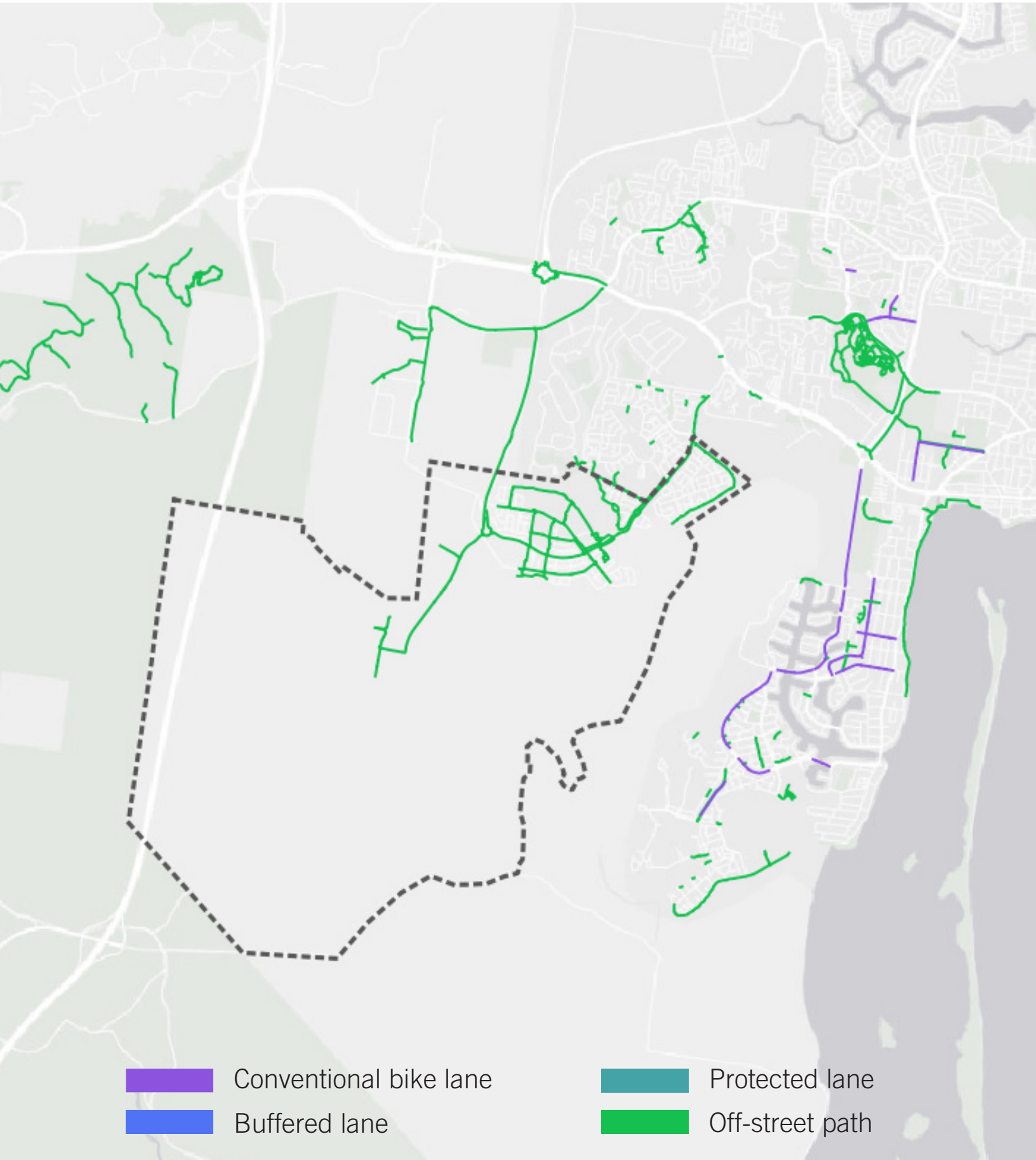
 High-stress route


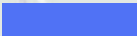
Baringa, QLD, Australia



Bicycle Network Analysis Bike Infrastructure



placesforbikes



 Conventional bike lane
 Buffered lane

 Protected lane
 Off-street path