



# City of Moreland, VIC, Australia

## Bicycle Transport Analysis Stress Map



peopleforbikes

Each score represents how well a person can access the corresponding type of destination via the low-stress bicycle network within the city. The scale runs from 0 (inaccessible) to 100 (completely accessible).

<b>OVERALL</b>	<b>34</b>
<b>PEOPLE</b>	<b>18</b>
<b>CORE SERVICES</b>	<b>30</b>
Dentists	21
Doctors	32
Grocery	45
Hospitals	18
Pharmacies	27
Social Services	29
<b>OPPORTUNITY</b>	<b>33</b>
Higher Education	22
K-12 Education	45
Technical/Vocational College	8
<b>RECREATION</b>	<b>43</b>
Community Centers	24
Parks	65
Trails	31
<b>RETAIL</b>	<b>52</b>
<b>TRANSIT</b>	<b>28</b>

**VISIT** [BNA.PeopleForBikes.org](http://BNA.PeopleForBikes.org) for dynamic web maps and data download

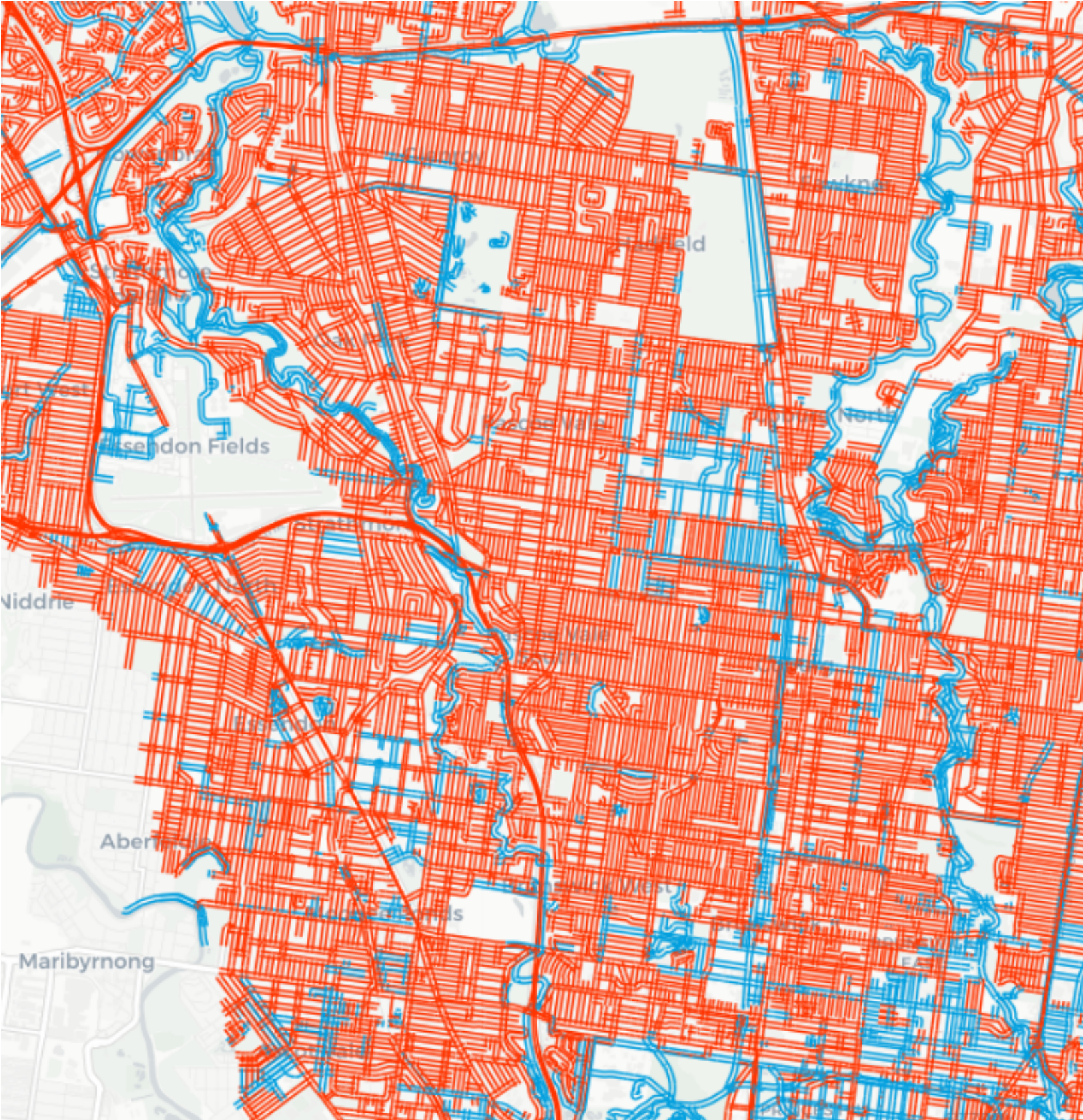
**SOURCES:** OpenStreetMap, 2016 Census (Australian Bureau of Statistics), QGIS, ESRI




# City of Moreland, VIC, Australia Bicycle Transport Analysis Stress Map



peopleforbikes



 Low-stress route

 High-stress route