



Hobart, TAS, Australia

Bicycle Transport Analysis Score Summary



peopleforbikes

Each score represents how well a person can access the corresponding type of destination via the low-stress bicycle network within the city. The scale runs from 0 (inaccessible) to 100 (completely accessible).

OVERALL	27
PEOPLE	24
CORE SERVICES	24
Dentists	7
Doctors	20
Grocery	39
Hospitals	18
Pharmacies	16
Social Services	27
OPPORTUNITY	32
Higher Education	28
K-12 Education	41
Technical/Vocational College	10
RECREATION	37
Community Centers	13
Parks	66
Trails	19
RETAIL	30
TRANSIT	13

VISIT BNA.PeopleForBikes.org for dynamic web maps and data download

SOURCES: OpenStreetMap, 2016 Census (Australian Bureau of Statistics), QGIS, ESRI



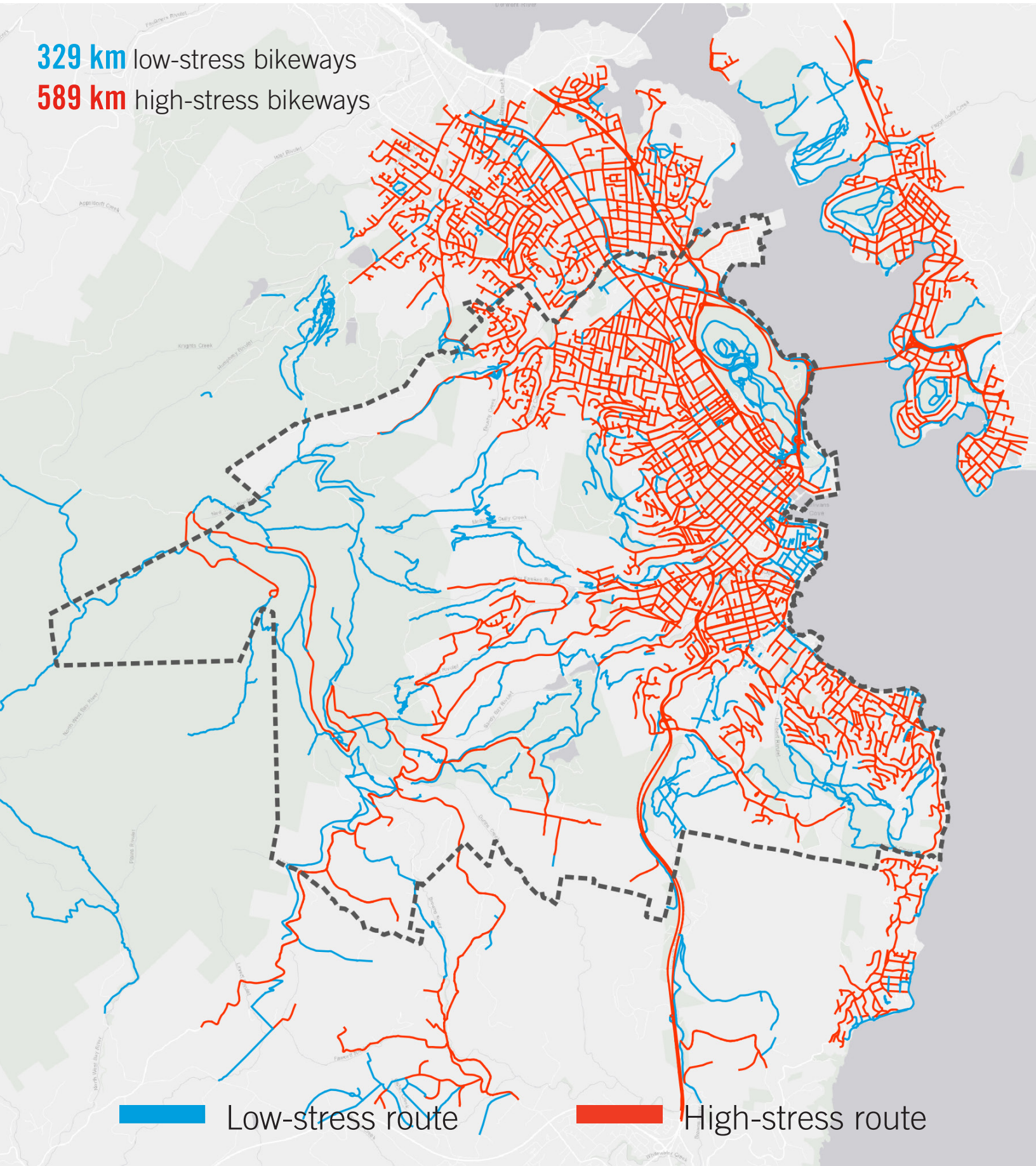
Hobart, TAS, Australia

Bicycle Transport Analysis Stress Map



peopleforbikes

329 km low-stress bikeways
589 km high-stress bikeways



 Low-stress route

 High-stress route